

**South**

**Philips India Ltd,**  
Temple Towers, 5th. Floor,  
Old no. 476, new no. 672,  
Anna Salai, Nandanam, Chennai 600 035  
Tel :- 91 44 6650 1000  
Fax :- 91 44 6650 1075  
Email : lighting.india@philips.com

**Philips India Ltd,**  
Philips Innovation Campus  
Manyata Tech Park, Nagavara  
Bengaluru-560045  
Tel : 080-4189 0000  
Fax :- 080 6692 9930  
Email : lighting.india@philips.com

**Philips India Ltd,**  
6-3-1109 / 1 / P/ 103, 3rd floor  
Jewalpawani Towers, Rajbhavan Road,  
Somajiguda, Hyderabad  
Tel :- 040 6646 7676 / 4825  
Fax :- 040 6678 7974  
Email : lighting.india@philips.com

**East**

**Philips India Ltd,**  
7, Justice Chandra Madhab Road,  
Kolkata 700 020  
Tel : 91 33 2486 7621-24  
Fax : 91 33 2486 8318  
Email : lighting.india@philips.com

For more information contact us at [lighting.india@philips.com](mailto:lighting.india@philips.com) or call at 1800 102 2929  
[www.lighting.philips.co.in](http://www.lighting.philips.co.in)

**West**

**Philips India Ltd,**  
Technopolis Knowledge Park,  
Mahakali caves road,  
Chakala, Andheri East, Mumbai 400093  
Tel :- 91 22 6691 2000  
Fax :- 91 22 6691 2389 / 6691 2398  
Email : lighting.india@philips.com

**Philips India Ltd,**  
602, Heritage Tower, 6th floor,  
Behind Visnagar Co-op Bank,  
Near Gujarat Vidyapith, Usmanpura,  
Ahmedabad, Gujarat  
Tel :- 91 79 2754 0708  
Fax :- 91 79 2754 0666  
Email : lighting.india@philips.com

**North**

**Philips India Ltd,**  
9th Floor, DLF - 9B, DLF Cyber City  
DLF Phase 3, Gurgaon 122002  
Tel :- 91 124 460 6000  
Fax :- 91 124 460 6666  
Email : lighting.india@philips.com

**Philips India Ltd,**  
8th floor, DLF - 9B, DLF Cyber City  
DLF phase 3, Gurgaon 122002  
Tel :- 91 124 460 6000  
Fax :- 91 124 460 6666



World's  
**No.1** sold  
LED Lighting



All rights reserved. Reproduction in whole or in part is prohibited. Owing to continuous innovation and improvement, Philips India reserves the right to make changes in the data/details without prior notice. Care has been taken to ensure that the information contained within is correct.

LEDtube Range 2014



**PHILIPS**





## LEDtube Range

Presenting our 2014 LEDtube Range which now comes in multiple variants. With superior features and benefits including high energy savings and long life, these products will meet your requirements at affordable cost.



Reliable



Energy Efficient



Comfortable



Environment Friendly



Safe



# Applications



Production area



Warehouse



Office and Institutions



Hospital



Retail



Parking lots

# Master LEDtube Range

Philips Master LEDtube integrates LED light source with frosted cover design into traditional linear fluorescent form, providing high efficacy and upto 60%\* energy savings.





# Master LEDtube 16W/1600lm

Master LEDtube 16W is a direct replacement for 36W T8 fluorescent tubelight providing upto 60%\* energy saving, long life and high efficacy of 100lm/watt.



## Product features



### Reliable

- Operates between -20°C to 45°C ambient temperature
- Long life : 40000\* hrs (L70)



### Energy Efficient

- 60%\*energy saving v/s conventional products
- THD < 10%



### Comfortable

- Diffused uniform light output
- Better Color Rendering (R9 > 0 & CRI > 83)



### Environment Friendly

- No mercury
- No glass



### Safe

- Built in protection circuit
- Tested for 4KV high-pot test
- Surge Protection 3KV

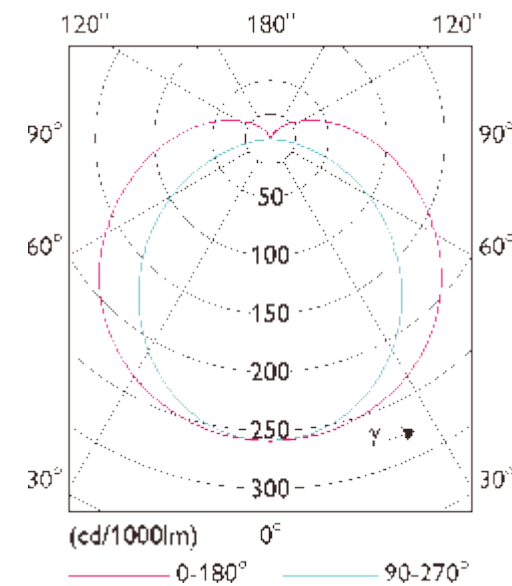
\*Terms & condition apply

## Technical Information

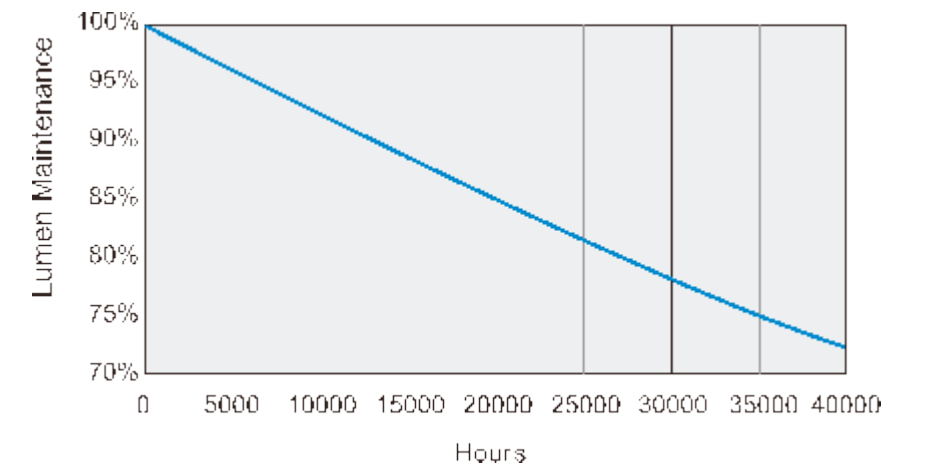
1 x TLED 16W 4000K/6500K

1 x 1600 lm

### Polar intensity diagram

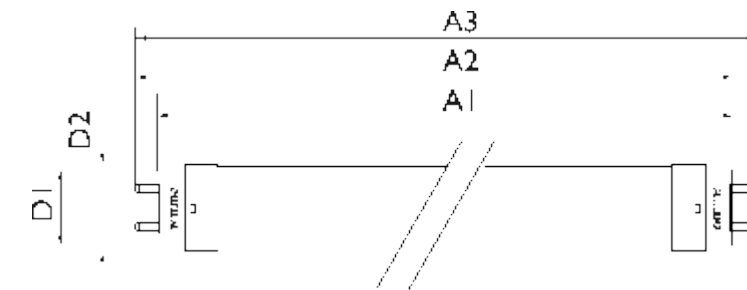


### Lifetime and Lumen Maintenance



## Technical Specifications

Product description	Wattage	Operating voltage	Cap	Length (mm)	Beam angle	Lifetime (hrs)	Lumen output (lm)	Color temp. (k)	CRI*
Master LEDtube 1200mm 16W840 T8	16	140-280V	G13	1200	150	40000	1600	4000	83
Master LEDtube 1200mm 16W865 T8	16	140-280V	G13	1200	150	40000	1600	6500	83



## Dimensions (mm)

Product	A1	A2	A3	D1	D2
1200mm	1198	1205	1212	25.68	28



# Master LEDtube 20W/2100lm

Master LEDtube 20W is a direct replacement for 36W T8 fluorescent tubelight providing upto 50%\* energy saving, long life and very high efficacy of 105lm/watt. This product is available in 4ft and 2ft.



## Product features



### Reliable

- Operates between -20°C to 45°C ambient temperature
- Long life : 40000\* hrs (L70)



### Energy Efficient

- 50%\*energy saving v/s conventional products
- THD < 10%



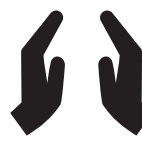
### Comfortable

- Diffused uniform light output
- Better Color Rendering (R9 > 0 & CRI > 83)



### Environment Friendly

- No mercury
- No glass



### Safe

- Built in protection circuit
- Tested for 4KV high-pot test
- Surge Protection 3KV

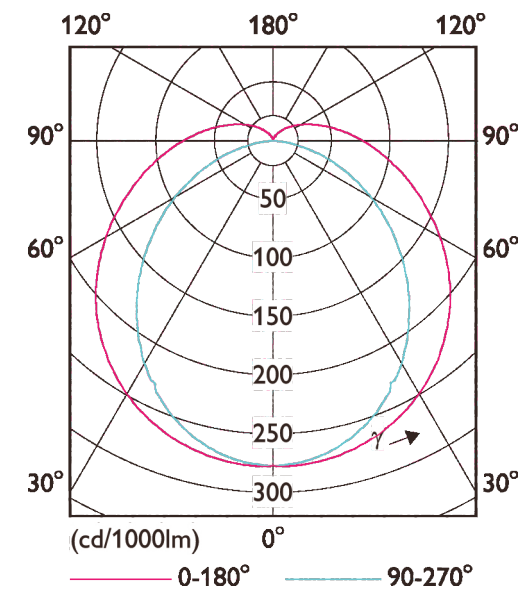
\*Terms & condition apply

## Technical Information

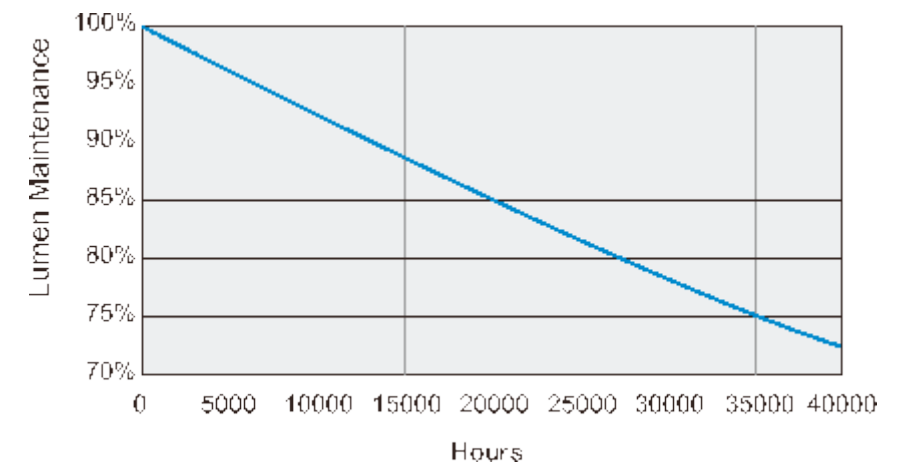
1 x TLED 20W 6500K 150D

1 x 2100 lm

### Polar intensity diagram

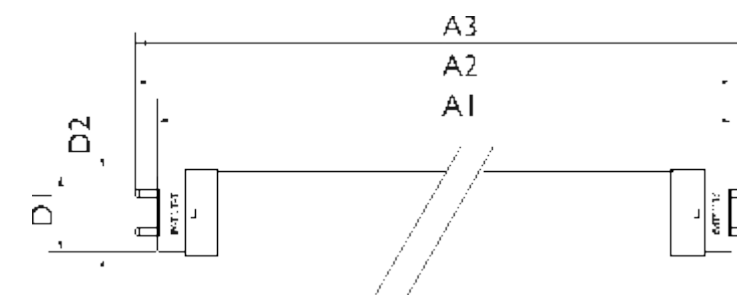


### Lifetime and Lumen Maintenance



## Technical Specifications

Product description	Wattage	Operating voltage	Cap	Length (mm)	Beam angle	Lifetime (hrs)	Lumen output (lm)	Color temp. (k)	CRI*
Master LEDtube 1200mm 20W840 T8 I	20	140-280V	G13	1200	150	40000	2100	4000	83
Master LEDtube 1200mm 20W865 T8 I	20	140-280V	G13	1200	150	40000	2100	6500	83
Master LEDtube 600mm 10W840 T8 I	10	140-280V	G13	600	150	40000	1050	4000	83
Master LEDtube 600mm 10W865 T8 I	10	140-280V	G13	600	150	40000	1050	6500	83



### Dimensions (mm)

Product	A1	A2	A3	D1	D2
1200mm	1198	1206	1213	25.68	28
600mm	589	596	603	25.68	28



## Case study



## Essential LEDtube Range

Philips Essential LEDtube integrates LED light source with frosted cover design into traditional linear fluorescent form, providing high efficacy and upto 50%\* energy savings.



## Consum Supermarkets

Valencia, Spain

### About the Project

Consum is the largest supermarket chain along the Mediterranean coast of Spain. They were looking for energy efficient lighting technology for saving energy costs.

"The actual results we obtained following the renovation have exceeded our expectations. We now have a supermarket equipped with the best lighting technology on the market that is, in return, producing energy savings of 60% compared with the installation we had previously. We can now be proud as we are having the most efficiently lit supermarket in the whole world of the Valencian Community."

- **Javier Martínez Huedo, Director, Maintenance Division, Development Department**



MASTER LEDtube Value InstantFit





# Essential LEDtube 20W/1600lm

Essential LEDtube 20W is a direct replacement for 36W T8 fluorescent tubelight providing upto 50%\* energy saving and efficacy of 80lm/watt. This product is available in 4ft and 2ft.



## Product features



### Reliable

- Operates between -20°C to 45°C ambient temperature
- Long life : 30000\* hrs (L70)



### Energy Efficient

- 50%\*energy saving v/s conventional products
- THD < 10%



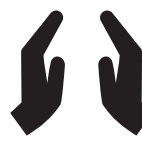
### Comfortable

- Diffused uniform light output
- Better Color Rendering (R9 > 0 & CRI > 80)



### Environment Friendly

- No mercury
- No glass



### Safe

- Built in protection circuit
- Tested for 4KV high-pot test
- Surge Protection 2KV

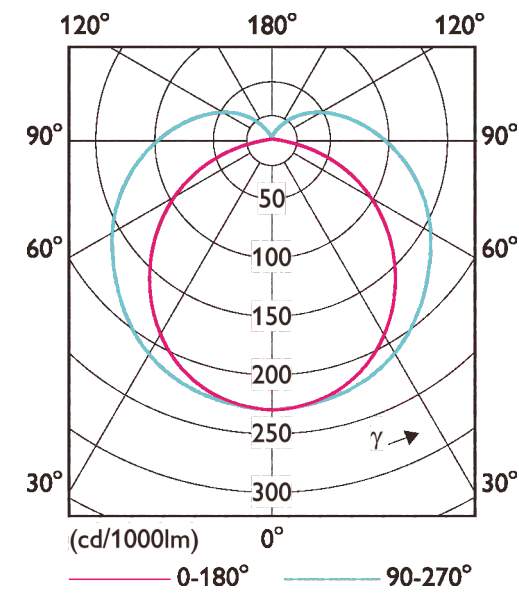
\*Terms & condition apply

## Technical Information

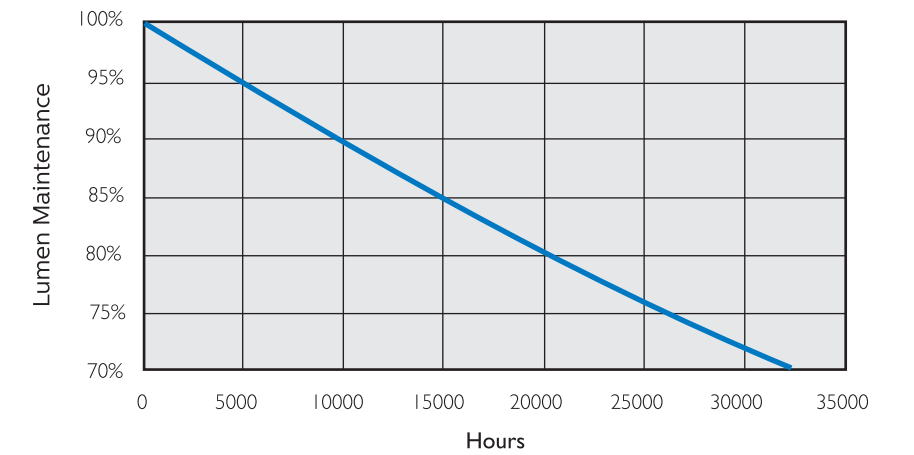
1 x TLED 20W 4000K/6500K

1 x 1600 lm

### Polar intensity diagram

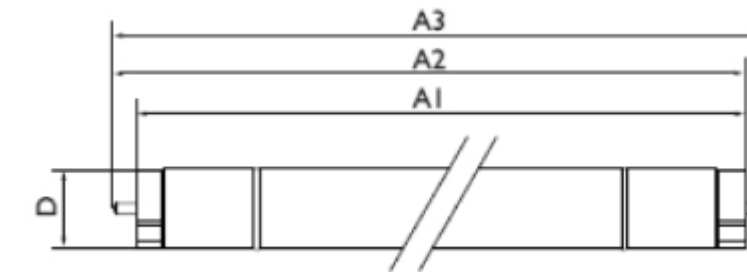


### Lifetime and Lumen Maintenance



## Technical Specifications

Product description	Wattage	Operating voltage	Cap	Length (mm)	Beam angle	Lifetime (hrs)	Lumen output (lm)	Color temp. (k)	CRI*
Essential LEDtube 1200mm 20W840 T8	20	140-280V	G13	1200	160	30,000	1600	4000	80
Essential LEDtube 1200mm 20W865 T8	20	140-280V	G13	1200	160	30,000	1600	6500	80
Essential LEDtube 600mm 10W840 T8	10	140-280V	G13	600	160	30,000	800	4000	80
Essential LEDtube 600mm 10W865 T8	10	140-280V	G13	600	160	30,000	800	6500	80



## Dimensions (mm)

Product	A1	A2	A3	D
600mm	588.5	595.5	602.5	27.5
1200mm	1198	1205	1212	27.5



## Case study



## East India Commercial Company

Eluru, Andhra Pradesh, India

### About the Project

East India Commercial Company, is a leading manufacturing group based at Eluru, Andhra Pradesh. They were looking for upgrading to a more energy efficient lighting product in order to save energy costs.

"After evaluating different players for LED lighting, we chose Philips because they are the best. I m in love with Philips products & if it is meeting my requirement, there is no reason to divorce."

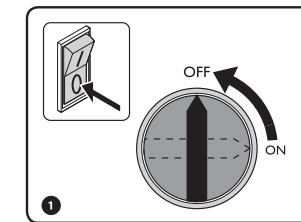
- **Brij Gopal Lunani, Managing Director, East India Commercial Company**



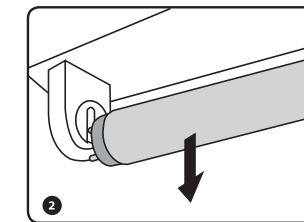
LEDtube

## Installation guide

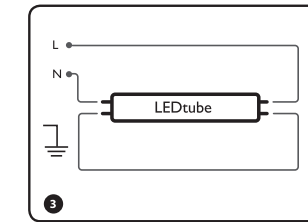
### Installation Procedure 1



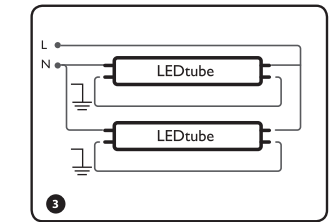
1 Turn the Mains off



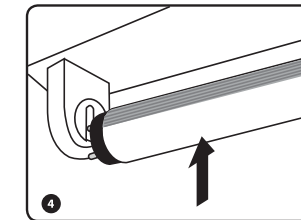
2 Pull out the Conventional Fluorescent Tube



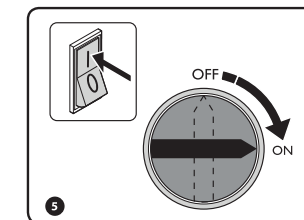
3 By pass the starter and ballast as shown in fig. for one LEDtube



3 By pass the starter and ballast as shown in fig. for multiple LEDtube

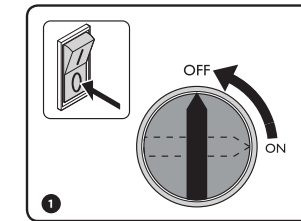


4 Fit in the Philips Essential LEDTube

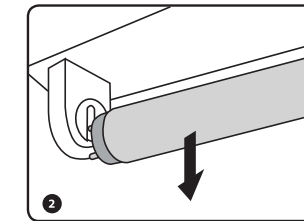


5 Switch on the power supply now

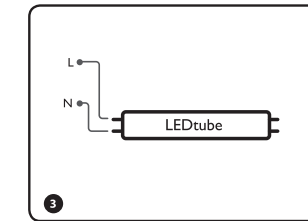
### Installation Procedure 2



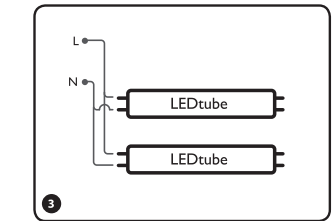
1 Turn the Mains off



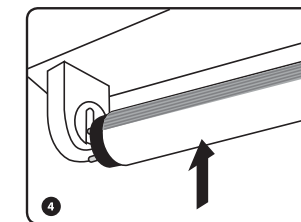
2 Pull out the Conventional Fluorescent Tube



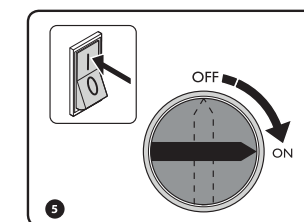
3 By pass the starter and ballast as shown in fig. for multiple LEDtube. **Line and neutral are marked on one end of the tube.**



3 By pass the starter and ballast as shown in fig. for multiple LEDtube. **Line and neutral are marked on one end of the tube.**



4 Fit in the Philips Essential LEDTube



5 Switch on the power supply now